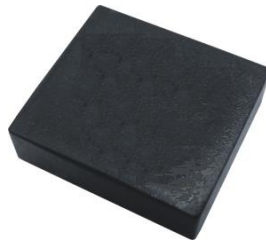




User Guide

125 kHz Proximity Reader Module

(DCM-0)



EM Read Only, 125kHz, +5V
22 x 20 x 6 (mm)
WEG26 / RS232 / TTL (w/o Antenna)

Working temperature: -10°C ~ 40°C
Storage temperature: -40°C ~ 80°C

Document version: 1.3

About Taiwan Batag RFID technology co., ltd.:

Taiwan Batag RFID technology co.,ltd. is a specialized manufacturer and supplier of RFID devices and transponders with over 10 years of professional RFID experience. We are unlike our competitors in that we are comprised of Barcode and Telecom companies that have been established for over 15 years.

Currently our major products include LF (125 kHz, 134.2 kHz), HF (13.56 MHz) and UHF (868 MHz, 915 MHz) RFID devices that are manufactured in popular RFID technologies including TI, TK4100, EM4100, EM4102, T5557, Hitag 2, Mifare 1K (S50), Mifare 4K (S70), Mifare UltraLight, Mifare DESFire, I.CODE SLI, SLE 66R35, Legic MIM256 and MIM1024, etc.

We not only provide and integrate our hardware but we also tailor the needs of our customers.

“Based in Taiwan, Advancing our horizons, and Expanding RFID products all over the world; we are Taiwan Batag RFID technology co., ltd.”

Taiwan Batag RFID technology co., ltd.

Website: <http://www.batag.com> and <http://www.batagrfd.com>

Address : 8F., New Silicon Valley Commercial Bldg., 18 Alley 1, Lane 768,

Sec. 4, Pa Teh Rd., Taipei 115 Taiwan

Tel :(886-2) 27885385, (886-2) 27885556

Fax:(886-2) 27885389

Email: info@batag.com

itag technology (H.K.) co.,ltd. Rm 1206 Kodak House II, 39 Healthy St. E., North Point, Hong Kong

Power Requirement: 5v@13mA nominal
 Frequency: 125KHz
 Card Format: EM 4001 or compatible
 Encoding: Manchester 64 bit, modulus 64
 I/O Output Current: 20 mA sink/source
 Drive Current: 300 mA
 Antenna Volt: 100 Volt PKPK

Output Format-ASCII

02	10 ASCII Data Characters	Checksum	CR	LF	03
----	--------------------------	----------	----	----	----

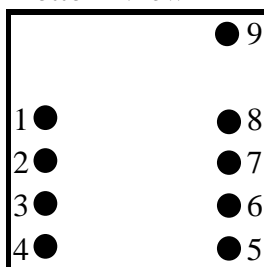
The checksum is the result of the ‘exclusive or ‘ of the 5 Bit Data bytes (the 10 ASCII data characters)

Data Structure Wiegand26 Bit

1	2	3	4	5	6	7	8	9	10	11	12	13	14	15	16	17	18	19	20	21	22	23	24	25	26	
P	E	E	E	E	E	E	E	E	E	E	E	E	O	O	O	O	O	O	O	O	O	O	O	O	O	P
EVEN PARITY(E)													ODD PARITY(O)													

P=Parity Start Bit and Stop Bit

Bottom View



ASCII

Pin1 Ground 0v Zero volts and Tuning Capacitor Ground
 Pin2 Reset Bar Strap to +5v
 Pin3 Antenna To External Antenna and Tuning Capacitor
 Pin4 Antenna To External Antenna
 Pin5 Strap to Ground
 Pin6 CMOS Serial ASCII
 Pin7 TTL Data Serial ASCII inverted
 Pin8 Beeper1/Led 2.7 KHz Logic.
 Pin9 +4.6 through +5.5V Supply DC volts

Wiegand26

Pin1 Ground 0v Zero volts and Tuning Capacitor Ground
 Pin2 Reset Bar Strap to +5v
 Pin3 Antenna To External Antenna and Tuning Capacitor
 Pin4 Antenna To External Antenna
 Pin5 Strap to Pin+5v
 Pin6 One Output
 Pin7 Zero Output
 Pin8 Beeper1/Led 2.7KHz Logic
 Pin9 +4.6 through +5.5V Supply DC volts

● EM Transmission Format

Output Format – ASCII

(COM port setting: 9600, N, 8, 1)

STX	Data	Data Checksum	CR	LF	ETX
02H	10 ASCII	2 ASCII	0DH	0AH	03H

The checksum is the result of the 'exclusive OR' of the 5 binary data bytes (the 10 ASCII data characters)

The Calculation of the Checksum

For example:

When EM tag (UID: 0F01EAF022) comes near the reader, if the COM port tool can only display visible ASCII character, you will see 0F01EAF02236, 0F01EAF022 is UID, and 36 is checksum.

Here is how checksum calculated:

```

      0000  1111  (0F)  0F01EAF022
XOR)  0000  0001  (01)  0F01EAF022
-----
      0000  1110  (0E)  (XOR result)
XOR)  1110  1010  (EA)  0F01EAF022
-----
      1110  0100  (E4)  (XOR result)
XOR)  1111  0000  (F0)  0F01EAF022
-----
      0001  0100  (14)  (XOR result)
XOR)  0010  0010  (22)  0F01EAF022
-----
      0011  0110  (36)  Checksum
  
```

If your COM port tool can display HEX code, you will see:

02 30 46 30 31 45 41 46 30 32 32 33 36 0D 0A 03

02	30	46	30	31	45	41	46	30	32	32	33	36	0D	0A	03
STX	0	F	0	1	E	A	F	0	2	2	3	6	CR	LF	ETX