

MeLE®

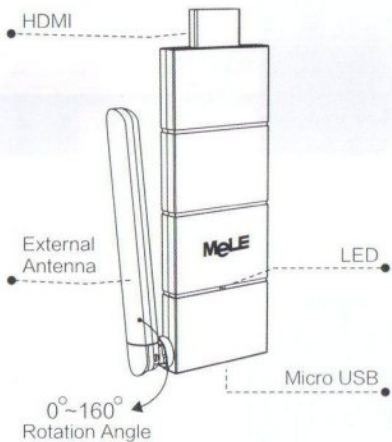


Quick Start Guide

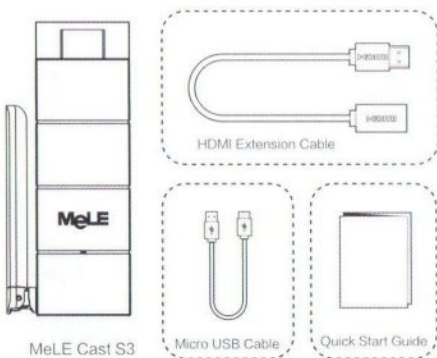
HDMI Streaming Media Player

MeLE Cast S3

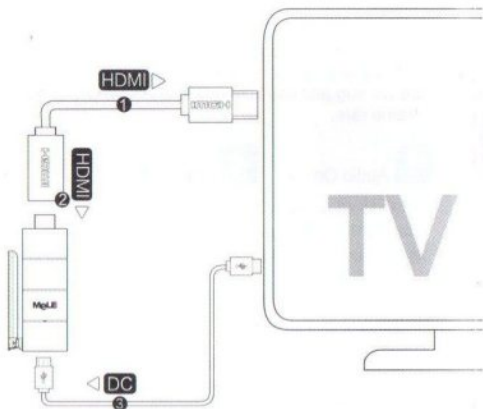
1.Product Design



2.Packing List



3.How To Connect



4.How It Works



7.EZCast on iOS

7.1 System requirements

iOS	iOS 7 and later
Device	All iPhone model after iPhone 4 All iPad model after iPad 2 All iPod touch after iPod touch 4th generatic
Resolution support	iPhone: 480x320~1136x640 iPad: 1024x768~2048x1536
Storage	At least 40MB free space needed

7.2 Download

- 1.You can use QR code scanner app to scan the QR code on display, then you will be redirected to downlo our app:



- 2.Or you can search the App name “EZCast” in App Store. (<http://goo.gl/TUA7tz>)

7.3 Device Connection

- 1.Before you start up EZCast, connect your iOS device WiFi with MeLE Cast dongle (SSID displaying as MeLE Cast-xxxxxxx).



- 2.After you opened the app, you can use “Demo mode” or “Find device” to start over to enjoy it.

3. Click "Find device" to discover MeLE Cast dongle and start to cast.
4. In the first time of app launching, we will pop up WiFi router list so that you can control your MeLE Cast dongle to connect your Home WiFi router to keep internet surfing. (We strongly recommend you to establish MeLE Cast dongle's WiFi with your home/company network to keep internet surfing since your mobile device's WiFi is linking to MeLE Cast dongle).

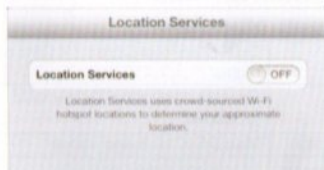


5. Except MeLE Cast dongle, if you have a ChromeCast dongle, you can also find it as an MeLE Cast dongle if your iPhone is under same network with your ChromeCast dongle.
6. In the demo mode, you can see all the major features demo even without connecting to MeLE Cast dongle.

7.4 Features



Photo
Viewer



- In Photo viewer, you can select photo and it will be displayed on your TV. You can also use gesture control to zoom in/out or change photos.
- We developed a practical tool called "Sketch", you can draw on the photo you picked, and save it if you like.

5.General

MeLE Cast dongle (S1 / S2 / S3...) is a series of fantastic gadgets for multi-screen interaction powered by EZCast. It can project the display of your mobile device (smart phone, tablet, notebook) to another screen (TV, monitor, projector) with HDMI through WiFi connection. It can enhance your TV/Projector with more features like decoding document files, linking with your Dropbox account, web surfing, photo viewer, streaming video, live camera, internet video and more. It can support most of popular protocols including Miracast, DLNA and AirPlay.

6.Quick Installation



1. Connect MeLE Cast dongle's micro USB port to your power supply or USB power (Please make sure your USB power can supply over 500mA)
2. Connect MeLE Cast dongle to your TV/Projector's HDMI port, and switch the TV/Projector's source to it
3. You will see the main menu pops up on your TV/Projector..
4. Download the EZCast in all markets (Windows/Mac/iOS/Android) to enjoy the wireless multi-screen interaction with your friends and families.



Watch video for installation: <http://goo.gl/ruSjBV>



Document Viewer

- You will have to allow MeLE Cast dongle to share your camera roll and enable the location service before using Photo function.
- The document viewer can support MS-office, PDF, and Apple's iWorks. Before you start to display, please sync the document files to your iOS device through iTunes.
- The document viewer supports sketch as well, that means you can make some note on the document, and save the page to camera roll.

Watch how to sync files to your iOS device:

<http://goo.gl/UF5IU8>



*Noted that some documents may not be displayed the same as shown on PC.



Live Camera

- Live camera is a real object camera which allows you to stream the image from mobile device's camera, and take a snap shot to edit.
- You can adjust image quality, switch from Front/Rear camera. You can enable Sketch and save the current image to album.



Video Player

- here are 2 sources to video streaming. One is to sync the video you like through iTunes (iTunes File Syncing), or you can select video from your recorded video (Camera Roll)
- Please be noted iOS will compress the recorded video before streaming to save the bandwidth, you can decide if you want to save it in EZCast for future use.
- If your synced video comes with subtitle, it will be automatically shown with video streaming.

- EZCast only support MPEG1, 2, 4, H.264, and RMVB video formats. For subtitle, we support srt, smi, ssa and cdg formats.

For subtitle support, please see demo video:

<http://goo.gl/0yq5Z8>



Music Player

- The music player allows you to stream music through WiFi, and we can support playlist.
- There are multiple music formats supported by EZCast: ape, flac, ogg, mp3, wma, wav, rm, m4a, aac, dts, ac3, ra, aif, aiff, mka

Noted that EZCast can't access your iTunes music library due to iOS limitation.



Web Browser

- EZCast comes with a built-in browser, and we also categorize several popular websites for you.
- The web page will dynamically change with different country setting in your device.
- Sketch function is also supported.



Cloud Storage

- We will link to your personal Dropbox and Google Drive account to let you access your cloud storage anywhere. All content will be shown for you to download and display.
- You can enable sketch function if you download and decode a document file.

* Noted that iOS version doesn't support Google Drive yet.



Live TV

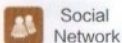
- We categorized different internet TV sites for you, so that you can easily select the TV list and watch the program instantly.
- The list may vary with different country setting.



Cloud media is a shortcut for all major web video sites, you can link to Youtube, Vimeo and other on-line video websites with the existing shortcuts.

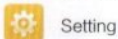


Update function allows you to check the app version, history and update it up to date.

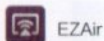


This is a quick way to see what's hot or popular in your Facebook video, you will be able to watch the video in big screen instead of watching it on small mobile devices.

Special Feature:



In setting function, you can setup MeLE Cast dongle's configurations including output resolution, change SSID password, setup router connection for internet surfing, boot up priority and update the latest firmware over the air (OTA).



- EZAir is an powerful mode which can be compatible with AirPlay. You can discover MeLE Cast dongle if you turn on AirPlay for your iOS device.
- In the iOS original photo, audio and video playback, you can simply click the display button to cast to MeLE Cast dongle.

- Some Apple device which supports AirPlay Mirroring will also be able to discover MeLE Cast dongle for screen mirroring.



For more demo videos, please subscribe to YouTube:
<http://goo.gl/enBNWj>

8.EZCast on Android

8.1 System requirements

Phone/Pad	Android 4.0 ICS or later with 1GB RAMat least
Resolution	WVGA ~1080p
Storage	At least 40MB free space needed

8.2 Download

- 1.You can use QR code scanner app to scan the QR code on display, then you will be redirected to download our app



- 2.Or you can search the App name "EZCast" in Google Play. (<http://goo.gl/1usQ23>)

8.3 Device Connection

- 1.Before you start the app, we suggest connect your Android device' s WiFi with MeLE Cast dongle (SSID displaying as MeLE Cast-xxxxxxx). However, if you skip WiFi connection first, the EZCast will allow you to connect to the dongle in app.



2. When you opened the app, you can use "Demo mode" or "Find device" to start over to enjoy our features.
3. Click "Find device" to discover MeLE Cast dongle and start to cast.
4. If you didn't connect EZCast in the beginning, our android app will automatically list the MeLE Cast dongle so that you can click it and connect it directly.
5. You will be able to find another EZCast installed phone if they are under the same network, it's a new feature to enhance your mobile phone to an MeLE Cast dongle.
6. We strongly recommend you to establish MeLE Cast dongle's WiFi with your home/company network to keep internet surfing since your mobile device's WiFi is linking to MeLE Cast dongle.



7.4 Features



Photo
Viewer

- In Photo viewer, you can select photo and it will be displayed on your TV. You can also use gesture control to zoom in/out or change photos.

- We developed a practical tool called "Sketch", you can draw on the photo you picked, and save it if you like.



Document Viewer

- The document viewer can support MS-office, PDF, and Apple's iWorks. Before you start to display, please sync the document files to your Android devices through cloud drives.
- The document viewer supports sketch as well, that means you can make some note on the document, and save the page to camera roll.

Watch how to sync files to your Android devices:
<http://goo.gl/UF5IU8>



*Noted that some documents may not be displayed the same as shown on PC.



Live Camera

- Live camera is a real object camera which allows you to stream the image from mobile device's camera, and take a snap shot to edit.
- You can adjust image quality, switch from Front/Rear camera. You can enable Sketch and save the current image to album.



Video Player

- There are 2 sources to video streaming. One is to stream from online video app, or you can select video from your recorded video (Camera Roll)
Please be noted Android will compress the recorded video before streaming to save the bandwidth, you can decide if you want to save it in EZCast for future use.
- If your synced video comes with subtitle, it will be automatically shown with video streaming.

* Noted that EZCast only support MPEG1, 2, 4, H.264, and RMVB video formats. For subtitle, we support srt, smi, ssa and cdg formats.



For subtitle support, please see demo video:
<http://goo.gl/0yq5Z8>



Music Player

- The music player allows you to stream music through WiFi, and we can support playlist.
- There are multiple music formats supported by EZCast: ape, flac, ogg, mp3, wma, wav, rm, m4a, aac, dts, ac3, ra, aif, aiff, mka

Noted that EZCast can't access your iTunes music library due to iOS limitation.



Web Browser

- EZCast comes with a built-in browser, and we also categorize several popular websites for you.
- The web page will dynamically change with different country setting in your device.
- Sketch function is also supported.



Cloud Storage

- We will link to your personal Dropbox and Google Drive account to let you access your cloud storage anywhere. All content will be shown for you to download and display.
- You can enable sketch function if you download and decode a document file.

*Noted Google Drive will be only available on Android 4.4 or later version.



Live TV

- We categorized different internet TV sites for you, so that you can easily select the TV list and watch the program instantly.
- The list may vary with different country setting.



Cloud Media

Cloud media is a shortcut for all major web video sites, you can link to Youtube, Vimeo and other on-line video websites with the existing shortcuts.



Update

Update function allows you to check the app version, history and update it up to date.



Social Network

This is a quick way to see what's hot or popular in your Facebook video, you will be able to watch the video in big screen instead of watching it on small mobile devices.

Special Feature:



Setting

In setting function, you can setup MeLE Cast dongle's configurations including output resolution, change SSID password, setup router connection for internet surfing, boot up priority and update the latest firmware over the air.



EZMirror

- EZMirror is fully compatible with Miracast, you can click the EZMirror button in EZCast, and the receiver will be switched to Miracast mode.
- Once you turn it on, there will be a 60seconds countdown for your mobile phone to connect with the receiver. Please select your Miracast function in your mobile phone setting page.



We also recommend you link your smart phone to your home network at the same time to keep internet connection.



DLNA

- DLNA is an industrial standard which allows you to stream multimedia formats through WiFi/LAN.
- When you click DLNA button, there will be a pop-up support list, if you have installed the DLNA app in the list, you can switch to it immediately.



9.EZCast on Windows

9.1 System requirements

CPU	Dual Core 2 GHz or higher (ATOM not supported)
Graphic card	Graphic card with 64MB VRAM or above
OS version	Windows XP SP3, Vista SP2, Windows 7 SP1, Windows 8/8.1 and above
PC's WiFi	802.11n (2T2R recommended)

*Noted that audio will not be supported on XP, and extension mode is not available on Win8 now.

9.2 Download

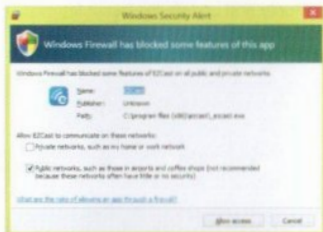
- 1.You can download Windows app from www.iezvu.com



- 2.Select the version you would like to download.

9.3 Device Connection

- 1.Please connect MeLE Cast dongle and power on.
- 2.After installation and restart your PC to take affected for our app.
- 3.Before you start the app, we suggest connect your PC' s WiFi with MeLE Cast dongle (SSID displaying as MeLE Cast-xxxxxxx), then open EZCast.
- 4.Open EZCast and allow access.



- 5.The EZCast will be listed, select the device ID and connect with it.



9.3 Features



Turn off



Extension
Switch



Mirror

- You can switch the different modes in this button, choose Mirror or Extension as you like.
- Our app will automatically select the matched resolution, there is no need to adjust any resolution manually.

*Noted that some video player app will not allow you to play video in extension screen.



High
Quality



Low
Quality

- This feature will switch the image quality of WiFi display.
- High quality mode will transfer better image quality but it will also consume more WiFi bandwidth, if the frame rate is not good with your WiFi environment, we will suggest use Low quality mode to get better frame rate.



Audio On



Audio Off

- This will allow you to turn on/off the audio transmission during WiFi display.

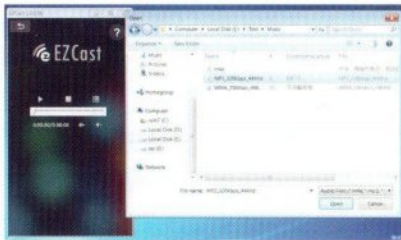
*Noted that audio transmission is not available in Windows XP.



Music Streaming

- When you enable music streaming, we will launch file manager so that you can choose the music you want to play to MeLE Cast dongle.
- You can use EZCast control bar to adjust the volume and progress bar.

*Noted that Only the supported audio formats will be played



Video Streaming

- Same as music streaming, we will launch file manager so that you can choose the video files you want to play to MeLE Cast dongle.
- You can use EZCast control bar to adjust the volume and progress bar.

*Noted that only the supported video formats will be played.





Update

Update function allows you to check the app version, history and update it up to date.



DLNA

- DLNA is an industrial standard which allows you to stream multimedia formats through WiFi/LAN.
- When you click DLNA button, MeLE Cast dongle will enter DMR mode so that you can select the DLNA app to find EZCast and play to it.



Setting

In setting function, you can setup MeLE Cast dongle's configurations including output resolution, change SSID password, setup router connection for internet surfing, boot up priority and update the latest firmware over the air.

10.EZCast on Mac

10.1 System requirements

CPU	Dual Core Intel Core i 1.4 GHz or higher (<i>PowerPC not supported</i>)
Graphic Card	Graphic card with 64MB VRAM or above
OS version	Mac OS X 10.8 and above
Recommended Models	Mac Book series and iMac series after E/2011

10.2 Download

- 1.You can download EZCast Mac OS app from www.iezvu.com



2. After download is done, double click it for installation.

10.2 Installation

1. Install EZCast app in to Macintosh HD



2. We will also install Audio driver, please continue installation when the screen pops up.



3. Please restart after installation is done.



4. After re-booting, you will be able to find EZCast app under applications.

10.3 Connection

1. Please connect WiFi with EZCast dongle before launching EZCast app.



2. If your WiFi is connected with EZCast, and open the app, it will search and discover EZCast dongle automatically and shows app main page as follows:

10.4 Features



- You can switch the different modes in this button, choose Mirror or Extension as you like.
- Our app will automatically select the matched resolution, there is no need to adjust any resolution manually.

*Noted that some video player app will not allow you to play video in extension screen.



High
Quality



Low
Quality

- This feature will switch the image quality of WiFi display.
- High quality mode will transfer better image quality but it will also consume more WiFi bandwidth, if the frame rate is not good with your WiFi environment, we will suggest use Low quality mode to get better frame rate.



Audio On



Audio Off

- This will allow you to turn on/off the audio transmission during WiFi display.

*Noted that audio transmission is not available in Windows XP.



Music Streaming

- When you enable music streaming, we will launch file manager so that you can choose the music you want to play to MeLE Cast dongle.
- You can use EZCast control bar to adjust the volume and progress bar.

* Only the supported audio formats will be played .



Video
Streaming

- Same as music streaming, we will launch file manager so that you can choose the video files you want to play to MeLE Cast dongle.
- You can use EZCast control bar to adjust the volume and progress bar.

*only the supported video formats will be played.



Update

Update function allows you to check the app version, history and update it up to date.



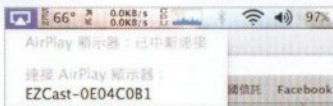
Setting

In setting function, you can setup MeLE Cast dongle's configurations including output resolution, change SSID password, setup router connection for internet surfing, boot up priority and update the latest firmware over the air.



EZAir

- EZAir is an powerful mode which can be compatible with AirPlay. You can discover MeLE Cast dongle if you turn on AirPlay for your iOS device.
- In the iOS original photo, audio and video playback, you can simply click the display button to cast to MeLE Cast dongle.



*Please be noted the Firmware of EZCast dongle must be higher than 11565 to support AirPlay Mirror



MeLE Online Store



MeLE Forum



Manufacture: Shenzhen Mele Digital Technology Ltd.

Add: Bldg #6, Zhongguan Honghualing Industrial South Park II 1213 Liuxian Ave, Nanshan District, Shenzhen 518055, PR China



Service

E-mail: meleservice@mele.cn Web: www.meleshop.com